

BENEFITS

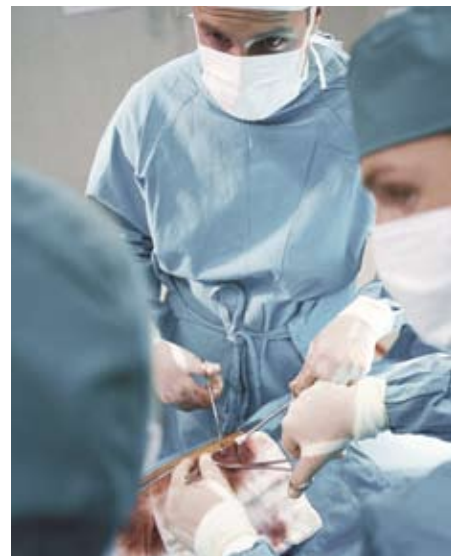
OR quality light for less. BERCHTOLD's new CHROMOPHARE® E 550 offers the performance of a large light, in a smaller, cost effective package. E 550 employs a unique one-piece polygon reflector to create a bright, uniform spot with Superior shadow control & deep cavity penetration. The efficiency of BRITe™ produces far less heat than conventional halogen lights. High maneuverability, easy operation, a multitude of options, and the ability to combine with flat panels and equipment booms create a product that is optimized for the entire surgical team.

FEATURES

- Efficient and cost-effective BRITe halogen light source
- Intensity-smoothing polygon optics, for consistent illumination across the field
- Optics produce both deep penetration and superior shadow control, for use in a wide range of cases
- Highly configurable, allowing you to build the light sets around your room
- Available in either cost-effective minor suspension or future-ready universal suspension configurations

TECHNICAL DATA

- Lighthead size: 23"
- Intensity: 70,000 – 130,000 lux
- Field diameter: 6.3-10.6"
- Depth of field: 47"
- Color temperature: 4500K
- Color rendering index: 94
- Bulb type: 150W BRITe halogen
- Bulb life: 1,000 hours each
- Electrical: 100/120/127v AC, 300VA
- UL listed



COMMON CONFIGURATIONS

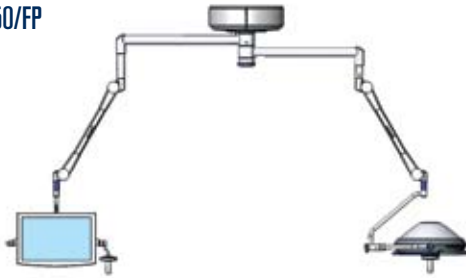
E 550 (minor)



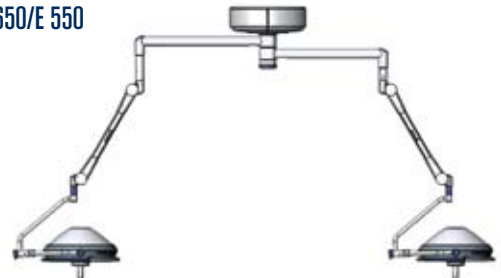
E 550



E 550/FP



E 650/E 550



	E 550 (minor)	E 550	E 550/FP	E 650/E 550
VERTICAL TRAVEL	48"	48"	48"	48"
REACH HORIZONTAL ARM 1 (STD.)	75"	71"	75"	75"
REACH HORIZONTAL ARM 1 (MAX.)	75"	114"	99"	114"
REACH HORIZONTAL ARM 2 (STD.)			71"	71"
REACH HORIZONTAL ARM 2 (MAX.)			95"	95"
WEIGHT RANGE OF FP ARM			15.42 LBS - 26.45 LBS	
TOTAL WEIGHT FOR DESIGN	92 LBS	142 LBS	227 LBS	245 LBS
MOMENT	302 FT • LBS	561 FT • LBS	1053 FT • LBS	1123 FT • LBS